



The Airfield, Headcorn, Kent, TN27 9HX
 UK
 Tel 01622 890967 - Fax 01622 891236
 Email symbiosis.suits@btinternet.com
 www.symbiosissuits.co.uk

ORDER FORM - LOPO SUIT

Nylon Taffeta fronted, fast or medium fall FS jump suit.

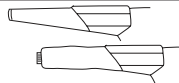
Name _____
 Sex _____
 Address _____

 Country _____
 Tel/Fax _____
 Email _____

All major Credit and Debit cards except AmEx.
 No.....
 Expiry date.....Security No.....
 Issue No if appropriate.....
 or Cheques made payable to Symbiosis Suits.

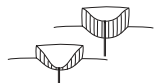
LOPO SUIT

Standard Fit _____ **£152**
 Looser Fit _____



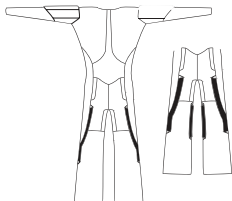
Arms

Stretch _____
 Bloused _____



Collar

High _____
 Low _____



Grips

Standard 38mm _____

Inside Knee grips **£12**

Colour piping along length of grips **£10**

Jack Knife Pocket **£11**

Paddeed Knees **£8**

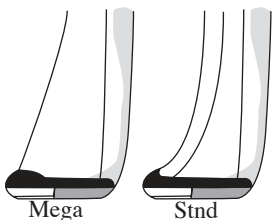
Padded Elbows **£8**

Standard Booties **£28**

Mega Booties **£34**

Vented Mega Booties **£42**

Rush Order **£40**



Symbi T'Shirt

WHITE - blue & black logo
 BLACK - blue & silver logo

	Sm	Med	Lge	XL
WHITE - blue & black logo				
BLACK - blue & silver logo				

£15

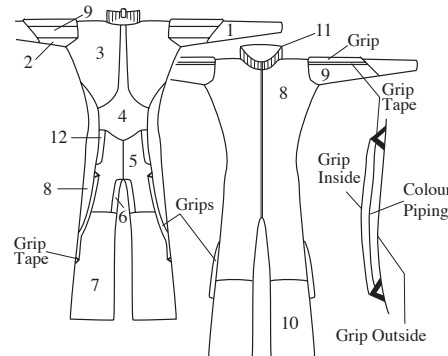
Post & Packing UK **£10**
 Europe **£15**
 Outside Europe **£26**

Payment for the full amount must accompany each order **TOTAL ENCLOSED**

COLOURS

CHOOSE YOUR COLOURS WITH A CROSS IN THE BOXES ON THE RIGHT.

If your design is not symmetrical write your colour choice on the drawings. Some colours are not a perfect match in the different fabrics. If in doubt, see fabric sample book.



Padded knees colour _____
 Padded elbows colour _____
 Piping on grips colour _____

PANELS COLOURS	1	2	3	4	5	6	7	8	9	10	11	12	Grips Outside	Grips Inside	Grip Tape
	Black														
Dark Grey															
Light Grey															
Silver Grey															
White															
Navy Blue															
Royal Blue															
Light Blue															
Blue Turquoise															
Petrol Green															
Jade Green															
Mid Green															
Dark Green															
Olive Green															
Lime Green															
Neon Yellow															
Golden Yellow															
Orange															
Red															
Bergundy															
Raspberry															
Neon Pink															
Light Pink															
Purple															
Dark Purple															
Lilac															

MEASUREMENTS

Please take your measurements carefully. We are unable to make your suit fit without your correct measurements. Study the diagram to assist you. Get someone to help you and double check each measurement. Measure yourself over a T-shirt and thin trousers.

Do not add anything to your measurements.

If we receive incorrect measurements, we will have to charge for modifications.

HEIGHT _____

WEIGHT _____

SHOULDERS _____

CHEST _____

Across the back from one shoulder seam to the other. Straight tape

Widest part - Around nipple

ARM _____

Girls - CUP SIZE _____

From the shoulder seam of a shirt to the bone of the wrist.

Widest Part

FOREARM _____

HIP _____

Widest part of the muscle.

Widest part around the buttocks

BICEP _____

THIGH _____

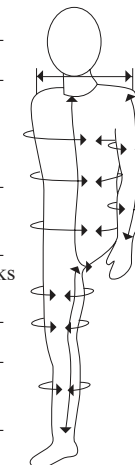
Widest part of muscle with the bicep relaxed.

LOWER THIGH _____

125mm above knee

CALF _____

Widest part of muscle



BODY _____

Be VERY careful with this measurement! Stand up straight, measure from under the crutch where the seams of your trousers meet, up the front to the collar of a close fitting T-shirt.

INSEAM _____

From the crutch to the ankle bone.

SHOE SIZE _____

(for booties only)